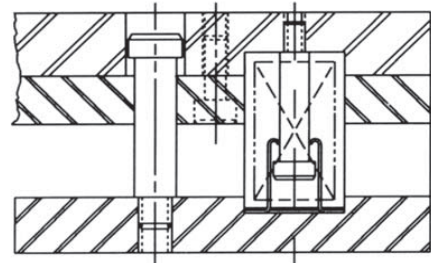
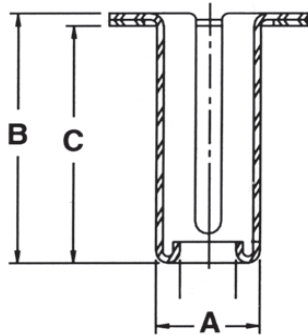
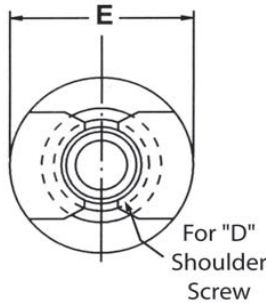




- Mit dem Federhalter werden Federn vorgespannt um die Werkzeugmontage und -demontage zu erleichtern / the retainer preloads the springs for easier die assembling or disassembling
- Die Vorspannung der Feder kann individuell eingestellt werden / the preload of the spring can be set individually
- Erhältlich für Ø 1-1/4" (32mm), 1-1/2" (40mm) und 2" (50mm) / available for springs 1-1/4" (32mm), 1-1/2" (40mm) and 2" (50mm) diameter
- Material: Stahl / steel

**SRXXXXXX**

**9XXXX-16**



Bestellnr. / Order No.	FederØ / Spring Diameter (mm)	HalterØ / Rod Diameter A (mm)	B (mm)	C (mm)	Schulterpassschraube / Shoulder Screw D (mm)	E (mm)
SR125150	32	16	42,9	38,1	8	32
SR125200			55,6	50,8		32
SR125250			68,3	63,5		32
SR150150	40	20	42,9	38,1	10	40
9-0615-16			47,6	44,4		36,5
SR150200			55,6	50,8		40
SR150250	50	25	68,3	63,5	12,5	40
SR200150			42,9	38,1		50
9-0815-16			47,6	44,4		33
SR200200	50	25	55,6	50,8	12,5	50
SR200250			68,3	63,5		50
9-0823-16			73	70		33

Bestellnr. / Order No.	FederØ / Spring Diameter (in)	HalterØ / Rod Diameter A (in)	B (in)	C (in)	Schulterpassschraube / Shoulder Screw D (in)	E (in)
SR125150	1-1/4	5/8	1-11/16	1-1/2	5/16	1-1/4
SR125200			2-3/16	2		1-1/4
SR125250			2-11/16	2-1/2		1-1/4
SR150150	1-1/2	3/4	1-11/16	1-1/2	3/8	1-1/2
9-0615-16			1-7/8	1-3/4		1-7/16
SR150200			2-3/16	2		1-1/2
SR150250	2	1	2-11/16	2-1/2	1/2	1-1/2
SR200150			1-11/16	1-1/2		2
9-0815-16			1-7/8	1-3/4		1-5/16
SR200200	2	1	2-3/16	2	1/2	2
SR200250			2-11/16	2-1/2		2
9-0823-16			2-7/8	2-3/4		1-5/16

