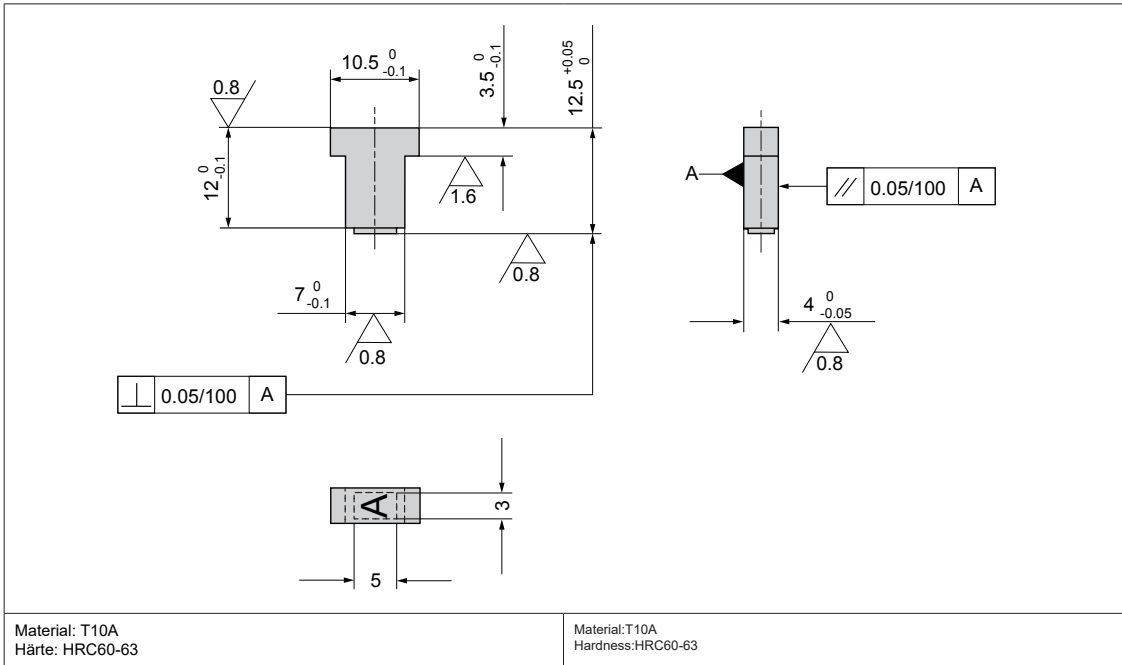


DM-YZMA



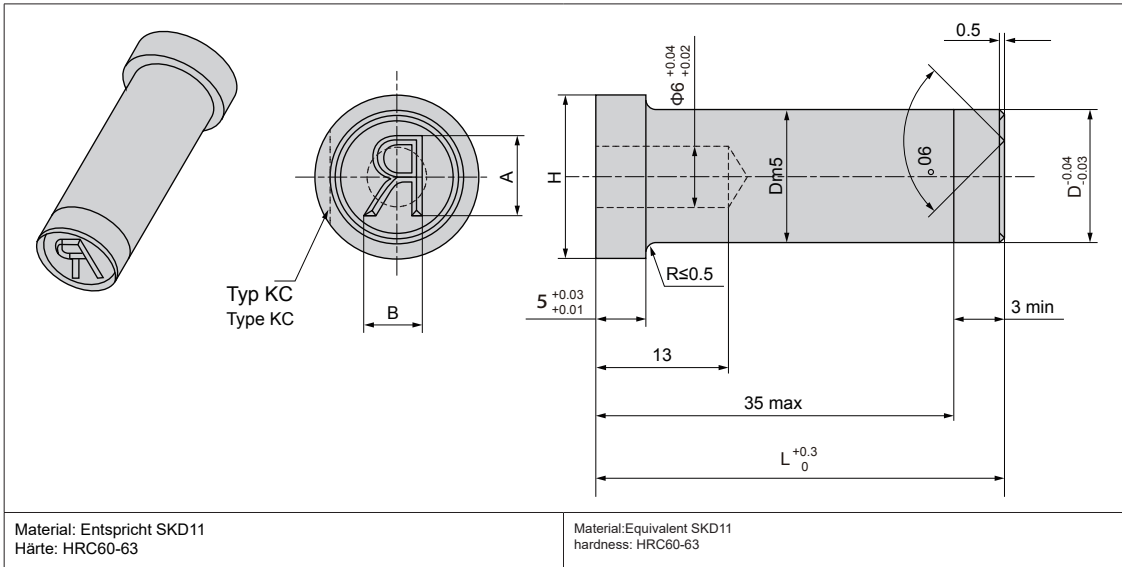
Bestell-Nr. Catalog No.	Text
	CHR
DM-YZMA	Buchstabe/Letter: ABCDEFGHIJ KLMNOPQRS TUVWXYZ Ziffer/Numeral: 1234567890

Bestellnummer / Order Number

-
DM-YZMA - **ABCD**




SZ-YZC



Bestell-Nr. Catalog No.		L Abmessung in 0,01 mm Schritten Dimensions span 0.1 mm	H	B	A	Text
Typ Type	D					CHR
SZ-YZC	10	40.0-120.0	13	3.3	5	123467890 ABCDEFGHIJ KLMNOPQRS TUVWXYZ
				4	6	
	13		16	5.3	8	
	16			6.5	10	
20	23	8.5	13			

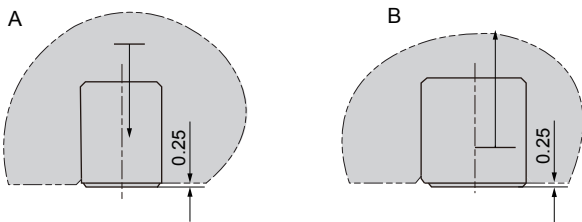
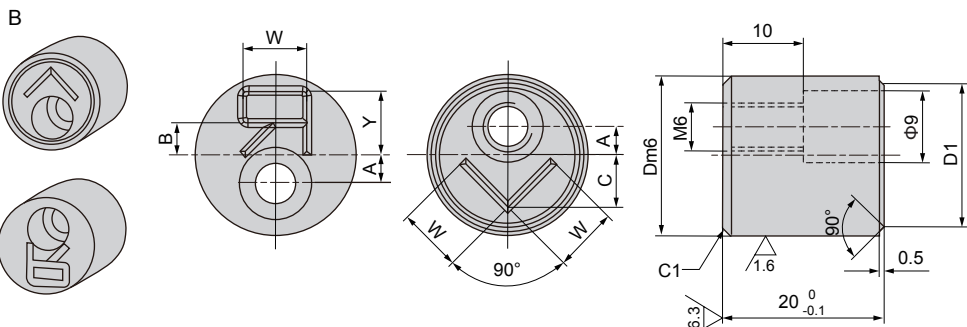
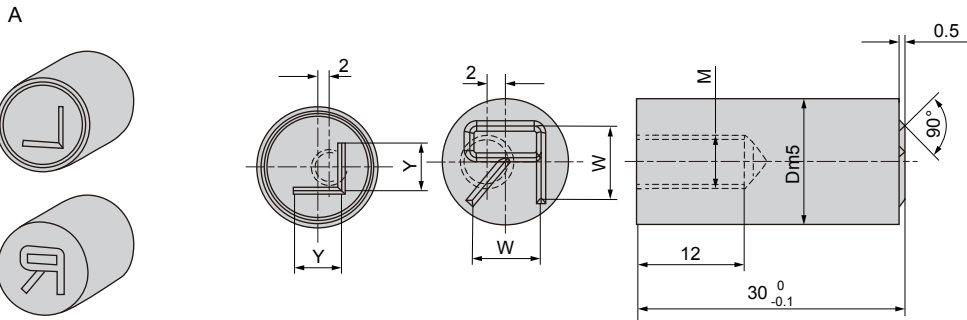
Bestellnummer / Order Number

	Bestellnr. / Catalog No.	-	D	-	L	-	A	-	CHR
	SZ-YZC	-	13	-	80	-	6	-	R
KC A=90	SZ-YZC	-	13	-	80	-	6	-	R - KC90



DM-TZDA

DM-TZDB




Prägetiefe 0,25 mm
Pressure intake is 0.25mm

Material:Entspricht SKD11
Härte:HRC60-63

Material:Equivalent SKD11
Hardness:HRC60-63

Bestell-Nr. Catalog No.		A	B	C	M	D1	W	Y	Text CHR	
Typ Type	D(m6)									
DM-YZDA	10	+0.015 +0.006	-	-	8	4	8	5	3	R L
	14	+0.018 +0.007	-	-	12	6	12	8	6	
DM-YZDB	16	+0.018 +0.007	1.5	4.5	5.7	-	14	4	3.2	
	20	+0.021 +0.008	3.5	4	6.5	-	18	8	8	

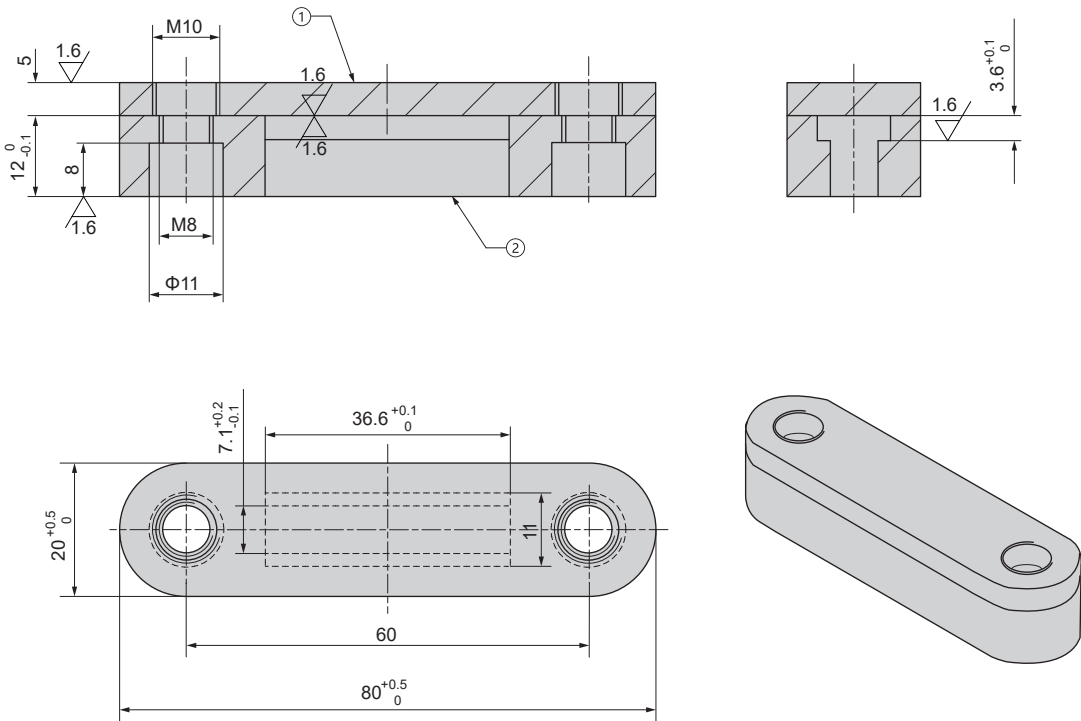
Bestellnummer / Order Number

 - -
DM-YZDA - 20 - R





DM-YZAB



Bauteile:

- | | |
|-------------------|--------------|
| 1. Abdeckplatte | C45 HRC40~45 |
| 2. Aufnahmeplatte | C45 HRC28~32 |
| 3. Schraube | M6x25(GB70) |

Component parts:

- | | |
|---------------|--------------|
| 1.Gasket | C45 HRC40~45 |
| 2.Fixed plate | C45 HRC28~32 |
| 3.bolt | M6x25(GB70) |

Bestellnummer / Order Number



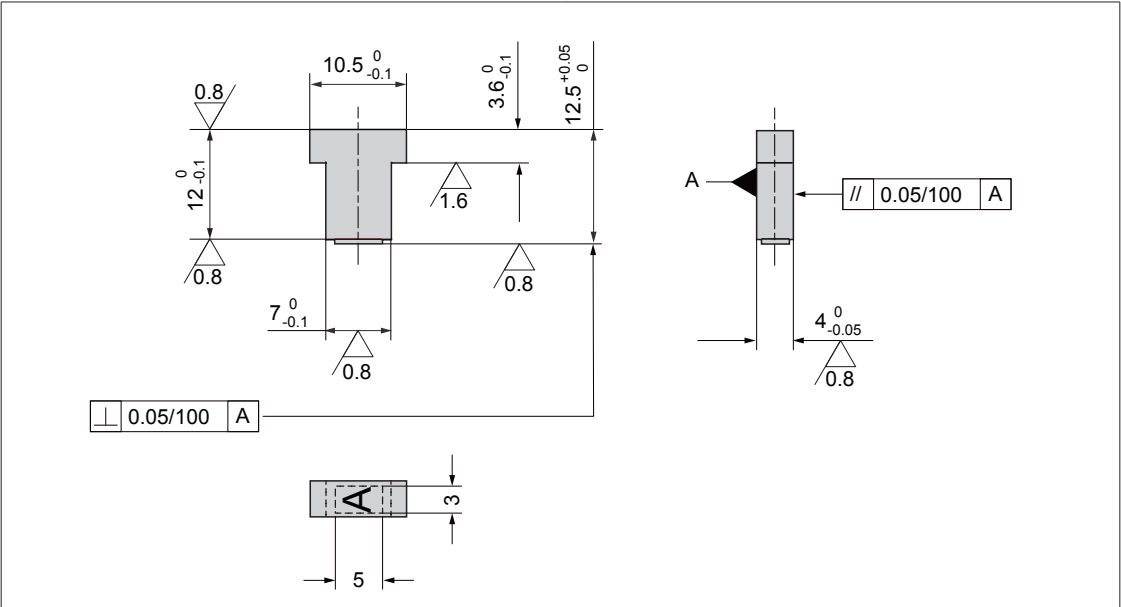
Bestellnr. / Catalog No.

DM-YZAB





DM-YZAH



Material: T10A
 Härte: HRC60-63
 Beschreibung: Höhe 0,5, GB2312 Nr. 4

Material:T10A
 Hardness:HRC60-63
 Text specification : Height 0.5, GB2312 No.4

Bestell-Nr Catalog No.	Hinweise Notes
CHAR	(26 Buchstaben, je einen/letters each one) ABCDEFGHIJKLMNOPQRSTUVWXYZ
NUM	(10 Ziffern, je eine/Numbers each one) 0123456789

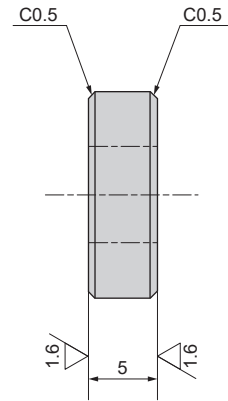
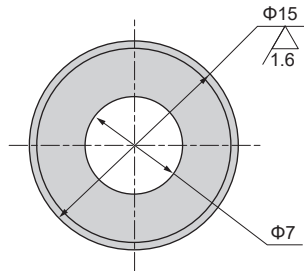
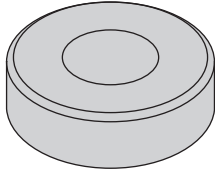
Bestellnummer / Order Number

☎ - -
 DM-YZAH - ABCD - 1234





SZ-YY16-2



Material: C45

Hinweis: SZ-YY16-2 wird mit SZ-YY16 verwendet

Material: C45

Note: SZ-YY16-2 used with SZ-YY16

Bestellnummer / Order Number



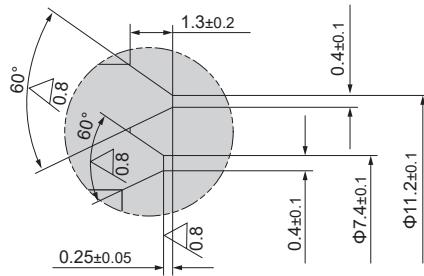
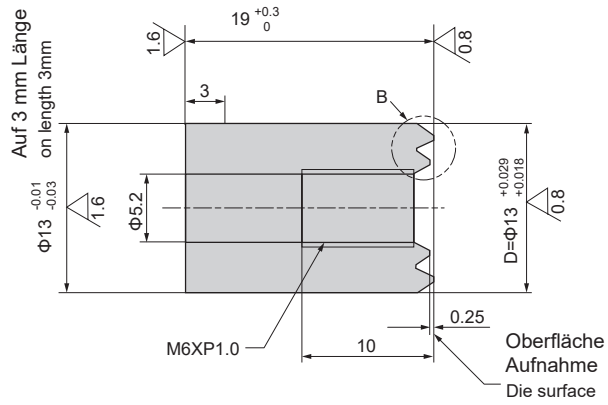
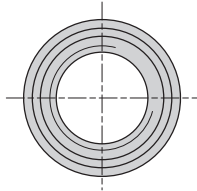
Bestellnr. / Catalog No.

SZ-YY16-2





SZ-YY13



Teil B, Detailansicht
Part B detail view

1. Material: SKS3
2. HRC56~58

1. Material: SKS3
2. HRC56~58

Bestellnummer / Order Number



Bestellnr. / Catalog No.

SZ-YY13

